



An IP65 LED circular bulkhead offering a true alternative to 28W 2D bulkheads

- A real equivalent to traditional fluorescent versions – energy efficiency > 60 Lm/W
- LED lifetime of over 50,000 hrs greatly reduces maintenance costs compared to fluorescent alternatives
- Available with SwitchLite presence detection options (can control up to 3 'slave' bulkheads)
- Available in 3hr Emergency version with a dedicated emergency LED

Applications

- Corridor/Staircases
- Pathways
- Cycle Bays
- Building Surroundings
- Toilets
- Utility areas

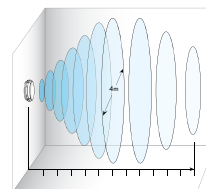
Leopard sensor

Instant light when the area becomes occupied, Leopard sensor has an integrated presence sensor with easy adjustments for sensitivity, lux levels and activation time

- Suitable for use in areas of infrequent occupancy
- Integral microwave detector for motion and ambient light (5 – 1,000 lux)
- Can operate up to three additional 'slave' Leopard Bulkheads
- Sensor can be adjusted for operation between 2secs and 1,200secs
- Microwave detector sensitivity adjustable between 20% and 100%
- Forward detection range up to 10m (depending on location and sensitivity adjustment)
- 4m diameter detection footprint
- Available with or without emergency mode control gear

Wall mounted detection zone

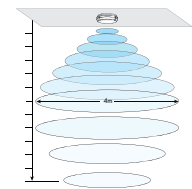
10m from face of fitting



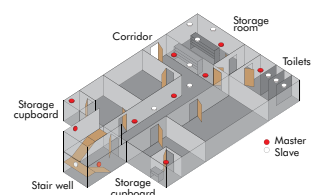
Microwave detector showing adjustments for duration, sensitivity and ambient light level

Ceiling mounted detection zone

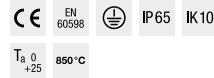
10m from face of fitting



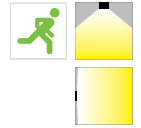
Typical layout of SwitchLite 'master' and standard 'slave' luminaires



Standards



Lamps



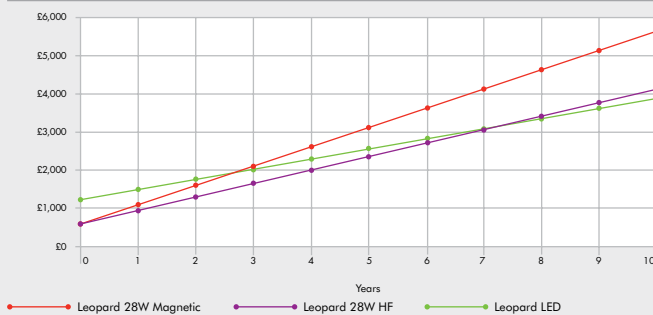
Energy efficiency: Corridor – 20m x 2m x 2.4m | 200 lx

New Installation

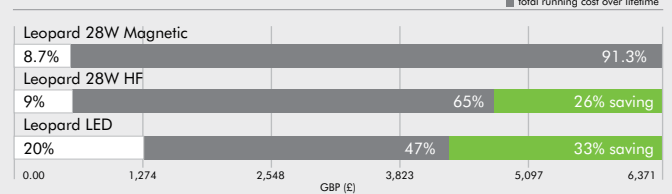
	No. Fittings	Illuminance (lux)	Uniformity	Connected Load (W/m ²)
Leopard LED	16	206	0.66	8.2
Leopard LED HF	16	208	0.67	10
Leopard LED 28W Magnetic	17	208	0.69	15.30

Payback LED vs Magnetic 2.4 years
Savings LED vs Magnetic over 10 years £1,879

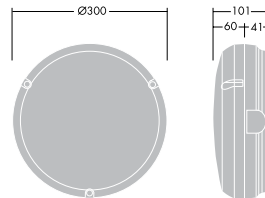
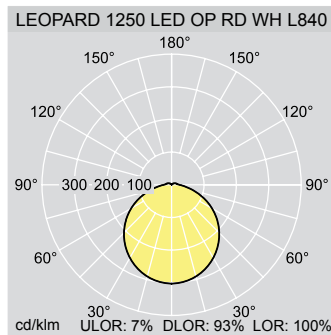
Course of overall costs of solution over lifetime



Investment costs vs. running costs of solution (absolute)



Overview



Ordering Guide

Supplied complete with LEDs

Description	Weight (kg)	SAP Code	Catalogue Number
LEOPARD 1250 LED OP RD WH L840	1.3	96240254	LEOLED1250W
LEOPARD 1250 LED MWS OP RD WH L840	1.3	96240255	LEROMWSLED1250W
LEOPARD 1250 LED E3 OP RD WH L840	1.6	96240256	E3LEOLED1250W
LEOPARD 1250 LED MWS E3 OP RD WH L840	1.6	96240257	E3LEROMWSLED1250W
Gear Tray to retrofit existing round Leopard 2D product			
LEOPARD LED GEAR TRAY L840		96240365	LELEDGT
LEOPARD LED GEAR TRAY WITH MWS L840		96240366	LELEDGTMWS
LEOPARD LED E3 GEAR TRAY L840		96240367	LELEDE3GT
LEOPARD LED E3 GEAR TRAY WITH MWS L840		96240368	LELEDE3GTMWS

WH White
 E3 3hr emergency function, manual test
 MWS Microwave detector

Materials/Finish

Body: polycarbonate
 Diffuser: opal polycarbonate plastic diffuser, white
 Gear tray: pre coated steel

Installation/Mounting

Suitable for surface mounting with rear BESA provision, side entry for through wiring with entry into 3-way terminal block and tool-free gear tray fixation. SwitchLite options have adjustments for sensitivity, daylight and activated period

Specification

To specify state: IP65 Polycarbonate bulkhead with white base, tool-free gear tray fixation, with opal screw fixed diffuser and LED PCB board.
 As Thorn Leopard LED.