



CorePro LED PLL



CorePro LED PLL EM/Mains 8W 840 4P

Philips CorePro LED PLL is the ideal uplamping solution for downlights & luminaires in a wide range of general lighting applications. It integrates a LED light source into a traditional fluorescent form factor to offer superb energy savings over a lifetime that's twice as long as fluorescent alternatives.

Product data

| General Information | |
|---|--------------------|
| Cap-Base | 2G11 |
| Nominal lifetime | 30,000 hour(s) |
| Switching Cycle | 200,000 |
| Lighting Technology | LED |
| Flux measurement reference | Sphere |
| EU RoHS compliant | Yes |
| Light Technical | |
| Color Code | 840 [CCT of 4000K] |
| Beam Angle (Nom) | 160 degree(s) |
| Luminous Flux | 1,000 lm |
| Color Designation | Cool White (CW) |
| Correlated Color Temperature (Nom) | 4000 K |
| Luminous Efficacy (rated) (Nom) | 125 lm/W |
| Color Consistency | <6 |
| Color rendering index (CRI) | 80 |
| LLMF At End Of Nominal Lifetime (Nom) | 70 % |
| Flickering value (PstLM) - Flickering value as per EN 61000-3-3 | 1 |
| Stroboscopic effect visibility measure (SVM) | 0.4 |
| Photobiological safety according to EN 62471 | RG0 |

| Operating and Electrical | |
|---|-------------|
| Line Frequency | 50 to 60 Hz |
| Input Frequency | 50 to 60 Hz |
| Power Consumption | 8 W |
| Lamp Current (Nom) | 42 mA |
| Starting Time (Nom) | 0.5 s |
| Warm-up time to 60% light | 0.5 s |
| Power Factor (Fraction) | 0.9 |
| Voltage (Nom) | 220-240 V |
| LED alternative to fluorescent lamp power | 18 W |
| Inrush current at mains | 8 |
| Max. lamp no. on MCB B type 10A - Mains | 90 |
| Max. lamp no. on MCB B type 10A - EM ballast without Comp. Cap. | 180 |
| Max. lamp no. on MCB B type 10A - EM ballast with Comp. Cap. | 30 |
| Max. lamp no. on MCB B type 16A - Mains | 150 |
| Max. lamp no. on MCB B type 16A - EM ballast without Comp. Cap. | 290 |
| Max. lamp no. on MCB B type 16A - EM ballast with Comp. Cap. | 49 |
| Ballast Compatibility | EM |

CorePro LED PLL

Temperature

| | |
|---------------------------|-----------------|
| Ambient temperature range | -20 °C to 45 °C |
| T-Case Maximum (Nom) | 70 °C |

Controls and Dimming

| | |
|----------|----|
| Dimmable | No |
|----------|----|

Mechanical and Housing

| | |
|----------------|---------|
| Bulb Finish | Frosted |
| Bulb Material | Glass |
| Product Length | 200 mm |
| Bulb Shape | PL-L |

Approval and Application

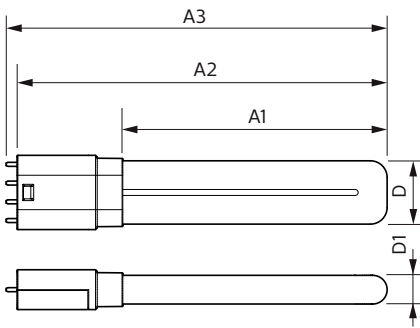
| | |
|-------------------------|---|
| Energy Efficiency Class | E |
| Energy Saving Product | Yes |
| Approval Marks | RoHS compliance TUV CE marking KEMA Keur certificate |

| | |
|-------------------------------|---------|
| Energy Consumption kWh/1000 h | 8 kWh |
| EPREL Registration Number | 1370824 |

Product Data

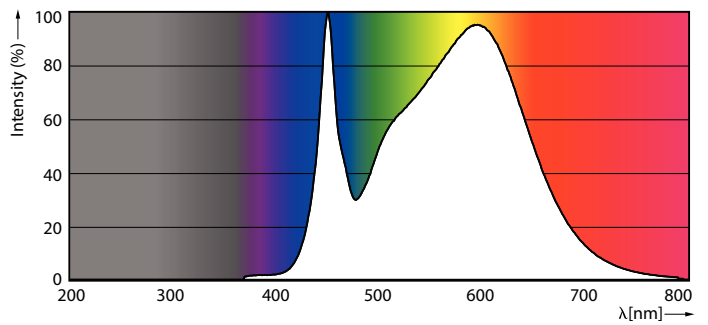
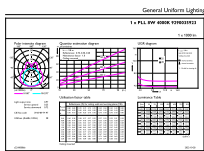
| | |
|---------------------------------|---------------------------------------|
| Order product name | CorePro LED PLL EM/Mains 8W 840 4P |
| Full product name | CorePro LED PLL EM/Mains 8W 840 4P |
| Full product code | 872016915701900 |
| Order code | 929003592302 |
| Material Nr. (12NC) | 929003592302 |
| Numerator - Quantity Per Pack | 1 |
| EAN/UPC - Product/Case | 8720169157019 |
| Numerator - Packs per outer box | 10 |
| EAN/UPC - Case | 8720169157026 |

Dimensional drawing



| Product | D1 | D2 | A1 | A2 | A3 |
|------------------------------------|-------|----|--------|--------|--------|
| CorePro LED PLL EM/Mains 8W 840 4P | 17 mm | | 156 mm | 218 mm | 224 mm |

Photometric data

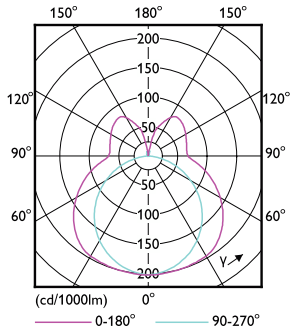


General uniform lighting - CorePro LED PLL EM/Mains 8W 840 4P

Spectral Power Distribution Colour - CorePro LED PLL EM/Mains 8W 840 4P

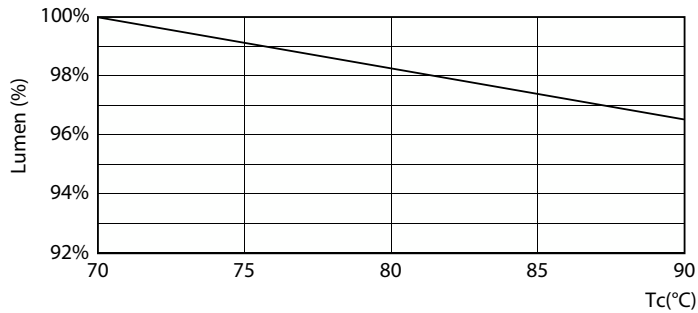
CorePro LED PLL

Photometric data

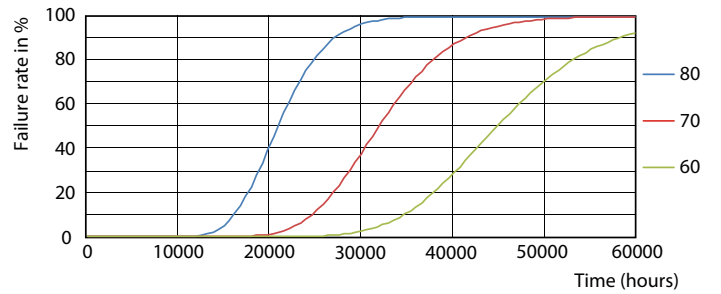


Light Distribution Diagram - CorePro LED PLL EM/Mains 8W 840 4P

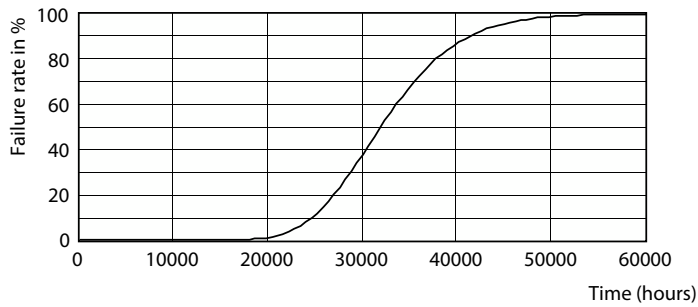
Lifetime



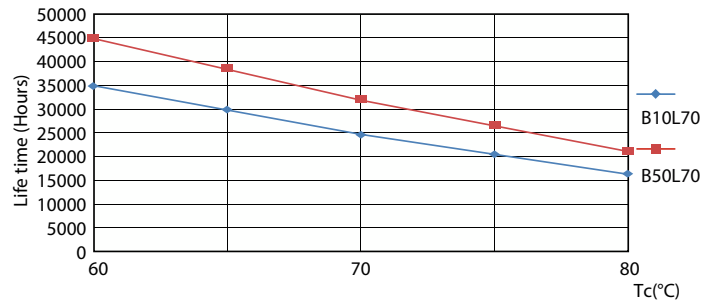
Lumen Maintenance Diagram - CorePro LED PLL EM/Mains 8W 840 4P



Life Expectancy Diagram - CorePro LED PLL EM/Mains 8W 840 4P



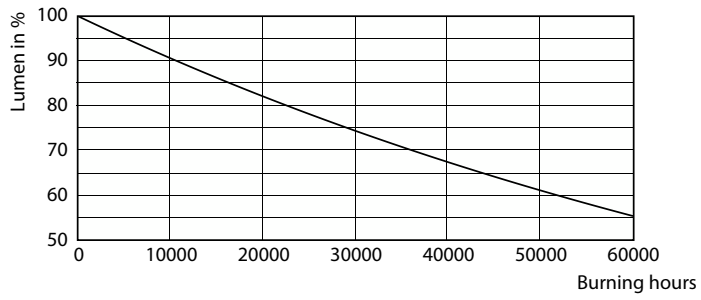
Life Expectancy Diagram - CorePro LED PLL EM/Mains 8W 840 4P



Life Expectancy Diagram - CorePro LED PLL EM/Mains 8W 840 4P

CorePro LED PLL

Lifetime



Lumen Maintenance Diagram - CorePro LED PLL EM/Mains 8W 840 4P

