

ELKO EP, s.r.o.
 Palackého 493
 769 01 Holešov, Vsetuly
 Czech Republic
 Tel.: +420 573 514 211
 e-mail: elko@elkoep.com
 www.elkoep.com



CRM-2H

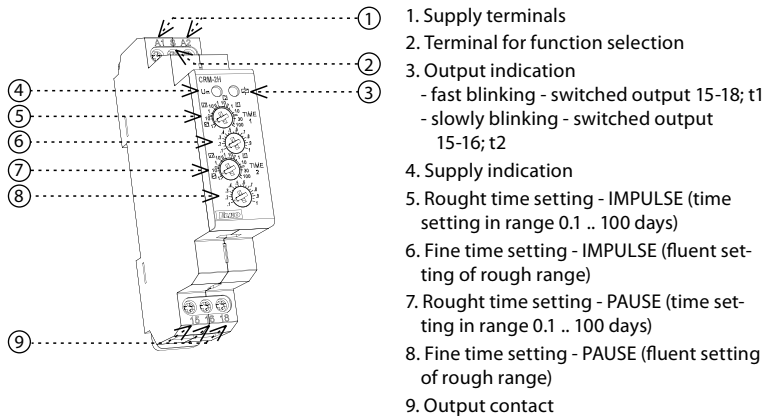
Assymmetric cycler

02-79/2016 Rev: 1

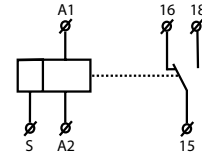
Characteristics

- cycler with independent adjustable switch ON/OFF
- it is used for regular room ventilation, cyclic dehumidification, light control, circulating pumps, noon signs, etc.
- 2 time functions:
 - 1) Cyclers beginning with pulse
 - 2) Cyclers beginning with pause
- function choice is done by an external jumper of terminals S-A1
- time scale 0.1 s - 100 days divided into 10 time ranges
(0.1 s - 1 s / 1 s - 10 s / 0.1 min - 1 min / 1 min - 10 min / 0.1 hrs - 1 h / 1 hrs - 10 hrs / 0.1 day - 1 day / 1 day - 10 days / 3 days - 30 days / 10 days - 100 days)
- rough time setting via rotary switch
- supply voltage: AC 230 V or AC/DC 12 - 240 V
- output contact: 1x changeover / SPDT 16 A
- output indication: multifunction red LED
- 1-MODULE, DIN rail mounting

Description



Symbol

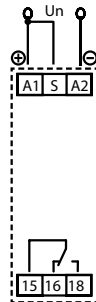


Connection

Cyclers beginning with pulse



Cyclers beginning with pause (jumper S-A1)



Type of load	 cos φ ≥ 0.95	AC2	AC3	AC5a uncompensated	AC5a compensated	AC5b	AC6a	AC7b	AC12
Mat. contacts AgNi, contact 16 A	250V / 16A	250V / 5A	250V / 3A	230V / 3A (690VA)	x	800W	x	250V / 3A	250V / 10A
Type of load	AC13	AC14	AC15	DC1	DC3	DC5	DC12	DC13	DC14
Mat. contacts AgNi, contact 16 A	250V / 6A	250V / 6A	250V / 6A	24V / 16A	24V / 6A	24V / 4A	24V / 16A	24V / 2A	24V / 2A

CRM-2H

Number of functions:	2 (function is chosen by connecting S-A1)	
Supply terminals:	A1 - A2	
Voltage range:	AC/DC 12 - 240 V	AC 230 V / 50 - 60 Hz
	(AC 50 - 60 Hz)	
Power input (apparent/loss input):	AC 0.7 - 3 VA /	AC max. 12 VA / 1.3 W
	DC 0.5 - 1.7 W	
Operating range:	-15 %; +10 %	
Supply indication:	green LED	
Time scale:	0.1 s - 100 days	
Time setting:	rotary switch and potentiometer	
Time deviation:	5 % - mechanical setting	
Repeat accuracy:	0.2 % - set value stability	
Temperature coefficient:	0.01 % / °C, at = 20 °C (0.01 % / °F, at = 68 °F)	

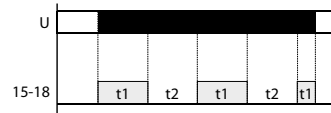
Output

Number of contacts:	1x changeover / SPDT (AgNi / Silver Alloy)	
Current rating:	16 A / AC1	
Breaking capacity:	4000 VA / AC1, 384 W / DC	
Inrush current:	30 A / < 3 s	
Switching voltage:	250 V AC1 / 24 V DC	
Output indication:	multifunction red LED	
Mechanical life:	3x10 ⁷	
Electrical life (resistive):	0.7x10 ⁵	
Reset time:	max. 150 ms	

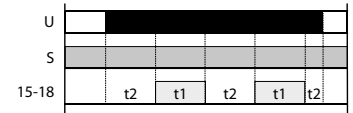
Other information

Operating temperature:	-20 °C to 55 °C (-4 °F to 131 °F)	
Storage temperature:	-30 °C to 70 °C (-22 °F to 158 °F)	
Electrical strength:	4 kV (supply-output)	
Operating position:	any	
Mounting:	DIN rail EN 60715	
Protection degree:	IP 40 from front panel / IP 20 terminals	
Overvoltage category:	III.	
Pollution degree:	2	
Terminal wire capacity (mm ²):	solid wire max. 1x 2.5 or 2x 1.5 /	
	with sleeve max. 1x 2.5 (AWG 12)	
Dimensions:	90 x 17.6 x 64 mm (3.5" x 0.7" x 2.5")	
Weight	65 g (2.3 oz.)	61 g (2.2 oz.)
Standards:	EN 61812-1, EN 61010-1	

Cycler beginning with pulse



Cycler beginning with pause



More accurate setting of timing for long periods of time

Example of time setting to 8 hours period:

For rough setting use time scale 1 - 10 s on the potentiometer.

For fine time setting aim for 8s on potentiometer, then recheck accuracy (using stopwatch etc).

On rough time setting, set potentiometer to originally desired scale 1 - 10 hours, leave a fine setting as it is.

Warning

Device is constructed for connection in 1-phase installation of AC 230 V or AC/DC 12 - 240 V main and must be installed according to norms valid in the state of application. Connection according to the details in this direction. Installation, connection, setting and servicing should be installed by qualified electrician staff only, who has learnt these instruction and functions of the device. This device contains protection against over-voltage peaks and disturbances in supply. For correct function of the protection of this device there must be suitable protections of higher degree (A, B, C) installed in front of them. According to standards elimination of disturbances must be ensured. Before installation the main switch must be in position "OFF" and the device should be de-energized. Don't install the device to sources of excessive electro-magnetic interference. By correct installation ensure ideal air circulation so in case of permanent operation and higher ambient temperature the maximal operating temperature of the device is not exceeded. For installation and setting use screw-driver cca 2 mm. The device is fully-electronic - installation should be carried out according to this fact. Non-problematic function depends also on the way of transportation, storing and handling. In case of any signs of destruction, deformation, non-function or missing part, don't install and claim at your seller.